



THE RETINA INSTITUTE
OF MISSISSIPPI

Brian C. Tieu, MD, PhD

Retina Doctor and Surgeon

Phone: 601-324-4066

Fax: 601-345-4272

www.retinainstitutems.com

Date: _____

Time: _____

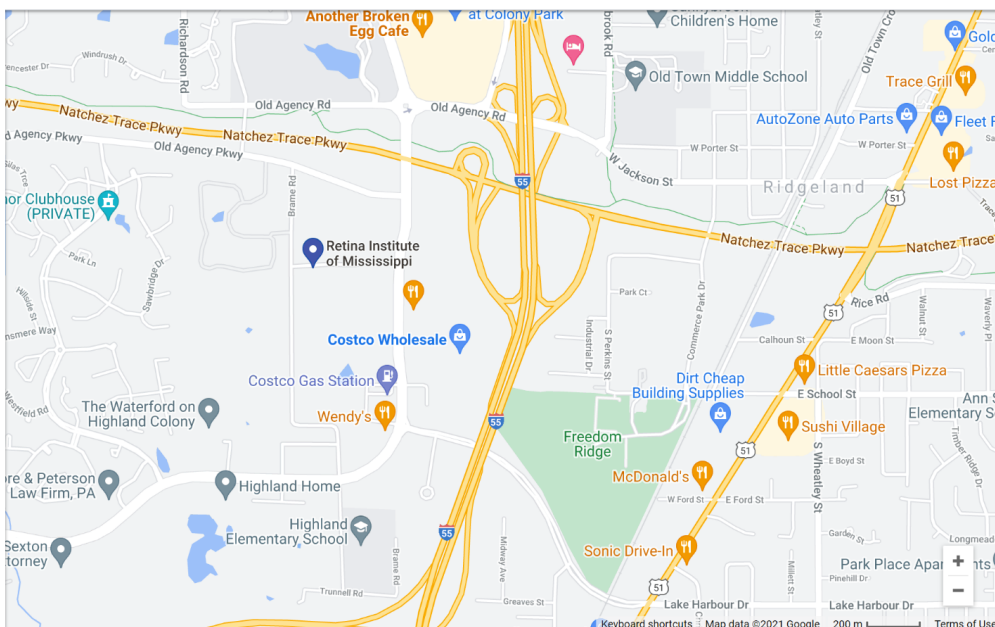
Referring Provider: _____

Reason for Referral: _____

Comments: _____

Please complete forms online prior to your appointment by logging into Patient Portal from our website.

We are located at **281 Trace Colony Park Dr., Suite A, Ridgeland, MS, 39157**. Take the Old Agency Exit off I-55 towards Highland Colony Parkway. We are just south of the Natchez Trace off Highland Colony Parkway, catty-corner to Costco Wholesale.



Scan for Directions in
Google Maps